

Oakley Health Area Data
and Information
May 2006

Produced by

office of
Local Government
K-State Research and Extension

and



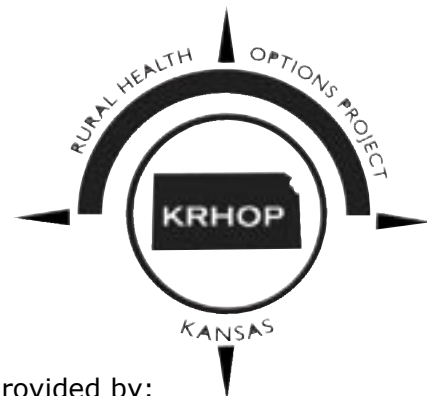
Cindi Browne
Student Assistant

Aaron K. Lusby
Extension Associate

John Leatherman, Director

In cooperation with:

Oakley Health
Area Steering
Committee



Funding for this report provided by:
Office of Rural Health Policy
Health Resources and Services Administration
(Grant# 5 H54RH00009-07-00)

Oakley Health Area Data and Information

The organization and delivery of health care services have undergone rapid evolution in recent years. For many Americans, the cost of services and access to care are important issues. This certainly applies to many rural areas where communities have struggled to maintain affordable, quality health care systems. As economic forces and technical advances continue to change health care, it is more important than ever for rural community leaders and health care providers to work together to ensure affordable, sustainable health care systems.

In an effort to provide useful information resources to rural community and health care leaders, the Kansas Rural Health Options Project (KRHOP) has teamed with the Office of Local Government, a unit of the Department of Agricultural Economics and K-State Research and Extension, to develop this report as a component of the Kansas Rural Health Works program. KRHOP is a partnership of the Office of Local and Rural Health at the Kansas Department of Health and Environment, the Kansas Hospital Association, the Kansas Board of Emergency Medical Services and the Kansas Medical Society. KRHOP is dedicated to assuring quality health care delivery in rural Kansas through the promotion of collaborative systems of care. Kansas Rural Health Works is supported by a federal grant to KRHOP (No. 5 H54RH00009-07-00) from the Health Resources and Services Administration, Office of Rural Health Policy.

This report presents a variety of information about the areas served by the health care system located in Oakley, KS, which includes Logan County, the southeast portion of Thomas County and extends into western Sheridan and Gove Counties. It includes demographic, economic, health and medical data, as well as statistics on traffic and crime specific to the area. When available, area statistics are compared with state statistics. It presents a current picture of the area and also provides some insight on the county's future.

The Office of Local Government welcomes any questions, comments or suggestions about this report or any of their other services. Contact your county Extension office or:

Dr. Aaron K. Lusby
Office of Local Government
Department of Agricultural Economics
K-State Research and Extension
Manhattan, KS 66506-3415

Phone: 785-532-2643
10E Umberger Hall
Fax: 785-532-3093
Email: alusby@agecon.ksu.edu

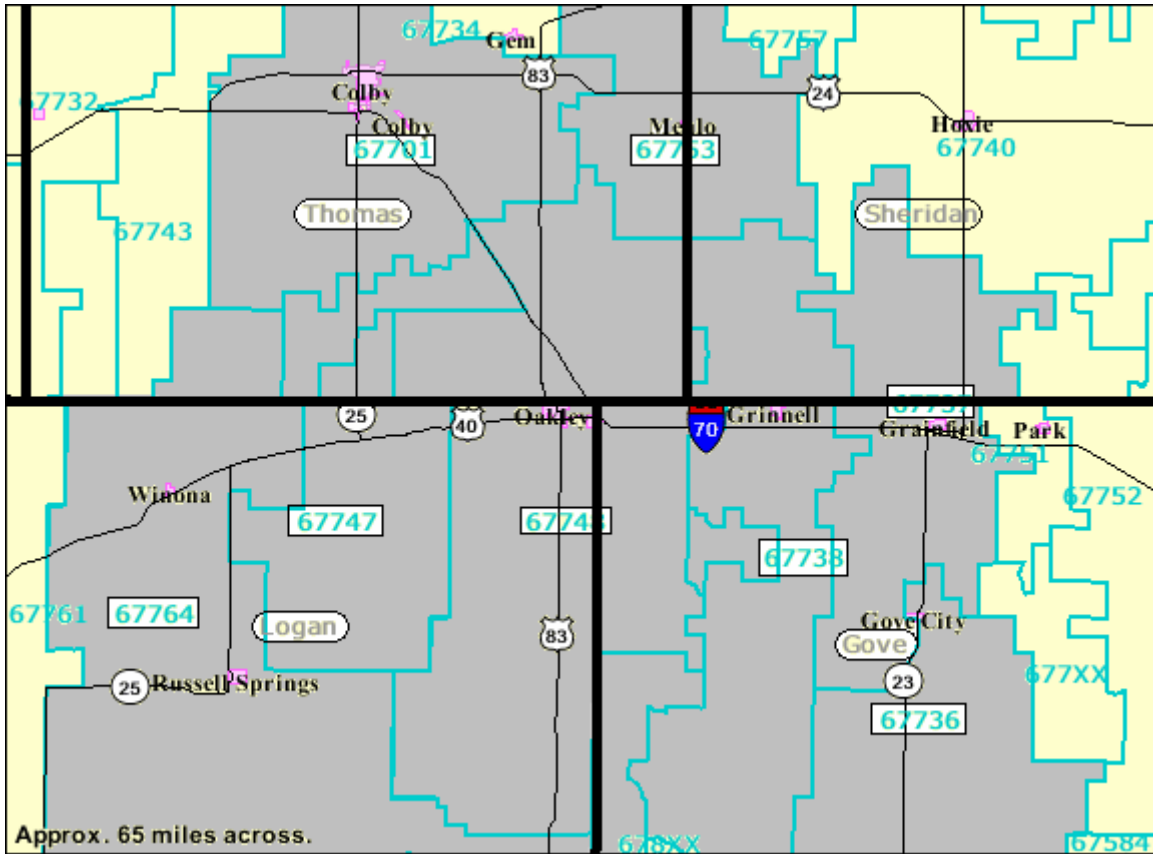
Table of Contents

Quad County Data and Information	1
Economic Data	4
Population Estimates.....	5
Population by Sex and by Age.....	5
Population by Race	6
Population by Educational Attainment.....	8
Households and Income	9
Owner-Occupied Housing Values	9
Income.....	9
Per Capita Income.....	9
Personal Income by Major Source.....	11
Employment.....	14
Health and Behavioral Data	15
Medicaid	16
Nursing Home/Assisted Living.....	17
Children.....	17
Maternity.....	19
Hospital Data	20
Education	22
School Districts.....	23
Enrollment Data	23
Traffic	27
Crime	31
Index	35

Quad County Data and Information

Demographics and Economics

The first section of the report covers demographic and economic information. The Quad County Health Area information is derived from Thomas County, Sheridan County, Gove County, and Logan County and represents the service area for the health care system located in Oakley, near the border with Thomas, Sheridan and Gove Counties. The Quad County Health Area's estimated current population is 11,119 people. This represents an almost 6.5 percent decline in population since the 2000 U.S. Census. Colby, the largest city in the area, has seen a 5.5 percent decline in population since 2000. During the same time period, Winona has seen the largest population decline, while Rexford has had the smallest population decline. Data from Claritas, Inc. indicates that the Logan County Health area will see a continued decline in population through 2010, when the population is expected to be 10,378. Additionally, 97 percent of the population is white, and females outnumber males in the Quad County Area, especially among the age groups 65 and older.



Shaded areas indicate zip codes within the Quad County Health Area.

Source: Claritas, Inc. 2005.

In terms of income, the average household will have an estimated \$52,828 in income in 2005, and the estimated annual income per person is \$21,619. From 1995 through 1999, per capita income increased in all four counties and Kansas. Per capita incomes fell from 1999 through 2000 and have since begun to climb again. Per capita income in these counties has been lower, for the majority of the time, than per capita income for the state as a whole. Transfer payments, such as government payments for health care and social security, taken as a percentage of total personal income, declined from 1996 through 1999 but increased after 1999. As older adults begin to make up a larger part of the population, transfer payments grow in importance as a source of income. From 1995 through 2003, unemployment rates have fluctuated but remained relatively steady in Logan County, increased in Gove, Sheridan and Thomas Counties and also increased in Kansas, with unemployment rates lower in all four counties compared to Kansas.

Health and Behavior

The second section of the report deals with health and behavioral information. The number of families served by state and Medicaid funded services, such as Temporary Assistance for Families and Food Assistance, has held steady in the four counties, but the percent of population using Medicaid funded health care services has increased. The number of nursing home beds at Logan County Nursing Home has slightly declined, while the nursing home occupancy rates have increased.

Part of this section is devoted to child and teen health. The latest data is from 2003. Logan County saw a 31 percent decrease in the rate of substantiated cases of child abuse and neglect and also saw an almost 45 percent reduction in the rate of juvenile court filings. At the same time Gove County saw a 32.1 percent increase in the rate of substantiated cases of child abuse and neglect and saw a 64 percent reduction in the rate of juvenile court filings while Sheridan County saw a 56 percent decrease in the rate of substantiated cases of child abuse and neglect and saw a 175 percent increase in the rate of juvenile court filings. At the same time Thomas County saw an almost 12 percent decrease in the rate of substantiated cases of child abuse and neglect and saw an almost 60 percent decrease in the rate of juvenile court filings. Births to school-aged mothers and low birth weight babies decreased in 2003 in Logan County and Sheridan County. In Gove County, the births to school-aged mothers decreased, while low birth weight babies increased in 2003. Thomas County saw an increase in births to school-aged mothers and saw a decrease in low birth weight babies. Logan County and Thomas County saw a decrease in the rate of births with adequate or better prenatal care, where as Gove County and Sheridan County saw an increase in 2003.

Statistics from the Kansas Hospital Association show that most people who used Logan County Hospital between March of 2003 and October of 2004 came from within Logan County. Conversely, 58 percent of hospital users in Logan County visited hospitals outside of Logan County.

Education

The Quad County Health Area has five school districts: Oakley (USD 274), Triplains (USD 275), Grinnell Public Schools (USD 291), Wheatland (USD 292) and Colby (USD 315). Total enrollment in the school systems has decreased from about 3,000 students in 1993-1994 to less than 2,500 students at the beginning of 2004-2005. This is consistent with the declining overall population in the area. During the same time period, dropout rates have declined the Quad County school districts. This section also includes statistics on school violence and academic achievement.

Traffic

In 2003, the latest available data, Logan County had 75 total traffic accidents, or a rate of 26.5 accidents per 1,000 people, compared to a rate of 34.4 accidents per 1,000 people in Gove County and 27.5 accidents per 1,000 people in Kansas. Sheridan County had a rate of 24.8 accidents per 1,000 people and Thomas County had a rate of 30.1 accidents per 1,000 people. Overall, crashes in the four counties declined between 1999 and 2004. Injury only crashes also decreased, but fatalities climbed as high as 12 in 2003 before declining in 2004. Deer-involved crashes declined from more than 100 in 1999 to approximately 60 in 2003, but in 2004 there were more than 100 deer-involved crashes.

Crime

The final section of the report looks at crime statistics for the Quad County Area. Crime index arrests, which include murder, rape, robbery, aggravated assault, burglary, larceny and motor vehicle theft, increased between 1991 through 2003 in the four counties and Kansas, while crime index offenses slightly decreased. Between 1997 and 2003, the number of full-time law enforcement officials increased, such that Logan County has approximately five officials per 1,000 people, compared to 1.1 officials per 1,000 people for Gove County, almost four officials per 1,000 people in Thomas County and almost four officials per 1,000 people for the state. At the same time, Sheridan's number of full-time law enforcement officials decreased to less than one official per 1,000 people.

Summary

The Quad County Area faces a declining population base. Per capita incomes have increased, but the use of Medicaid funded services for health care has slightly increased. The number of nursing home beds has slightly declined, though nursing home occupancy rates have increased. Births to school-aged mothers have decreased in Logan, Gove, and Sheridan Counties, while they increased in Thomas County. The number of low birth weights decreased in Logan County, Sheridan County, and Thomas County, but increased in Gove County. Births with adequate prenatal care have decreased in Thomas County Logan County, but increased in Gove County and Sheridan County. Enrollment in the school systems has decreased as the population has declined in all four counties. Logan County and Sheridan County have a lower rate of automobile accidents than the state, while Gove County and Thomas County have a higher rate of automobile accidents than the state. Many of these accidents involve deer. Crime index arrests for Kansas and the four counties have increased, while crime index offenses have decreased.

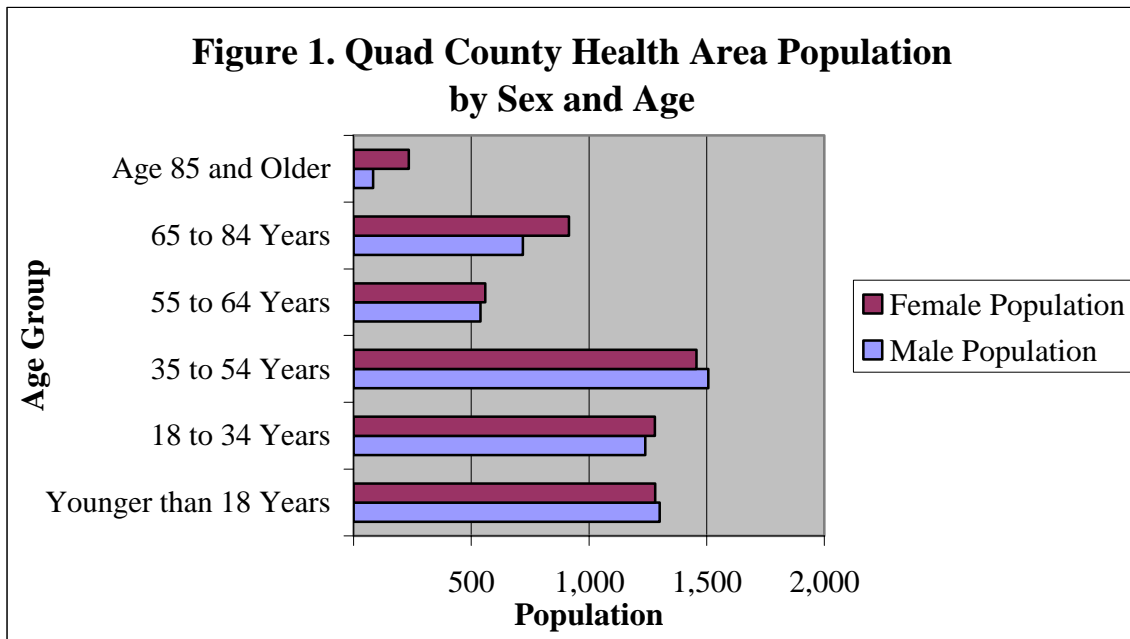
Economic Data

Table 1. Population Estimates for Logan County Health Area, 2005

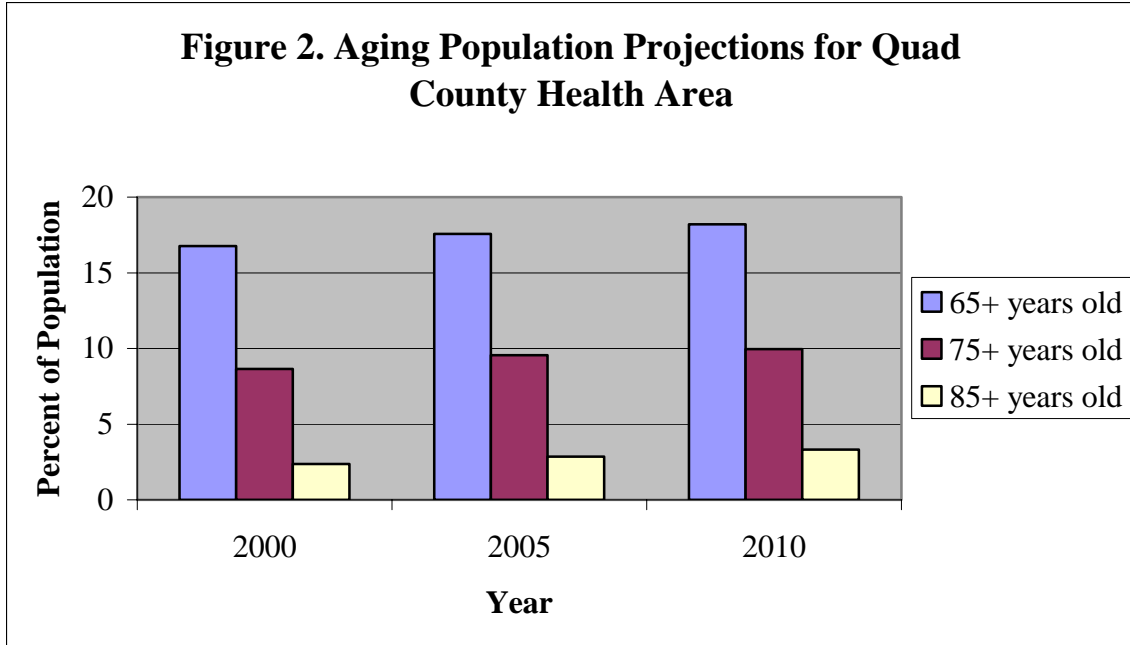
	Quad County Area*	Winona	Oakley	Russell Springs	Grainfield
Population	11,119	209	2,006	30	307
Percent Change 2000-2004	-6.4	-8.3	-7.8	-6.3	-6.1
	Rexford	Grinnell	Gove	Colby	Balance of Area
Population	153	308	98	5,145	2,863
Percent Change 2000-2004	-2.5	-6.4	-6.7	-5.5	-7.3

U.S. Census Bureau, 2005 and Claritas, Inc. (2005)

*2005 estimate



Claritas, Inc. 2005



Claritas, Inc. (2005)

Table 2. Aging Population Projections

	2000		2005		2010	
	Percent	Number	Percent	Number	Percent	Number
65+ years old	16.77	1,993	17.56	1,953	18.21	1,890
75+ years old	8.64	1,028	9.55	1,062	9.96	1,024
85+ years old	2.36	281	2.86	318	3.31	344

Claritas, Inc. (2005)

Table 3. Estimated Population by Single Race Classification, 2005

	Logan Area	Percent
White Alone	10,798	97.1
Black or African American Alone	59	0.5
American Indian and Alaska Native Alone	26	0.2
Asian Alone	35	0.3
Native Hawaiian and Other Pacific Islander Alone	2	0.0
Some Other Race Alone	108	1.0
Two or More Races	91	0.8
Total	11,119	100.0

Claritas, Inc. (2005)

Table 4. Estimated Population Hispanic or Latino by Origin, 2005

Category	Number	Percent
Not Hispanic or Latino	10,896	97.99
Hispanic or Latino:	223	2.01
Mexican	146	65.47
Puerto Rican	5	2.24
Cuban	5	2.24
All Other Hispanic or Latino	67	30.04

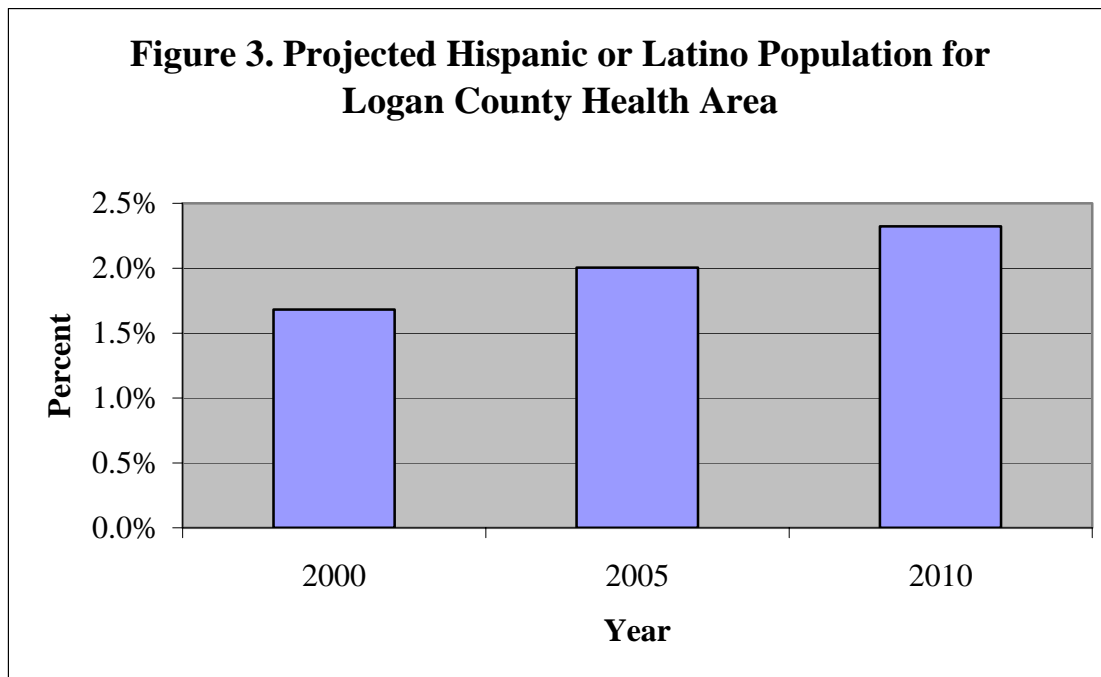
Claritas, Inc. (2005)

Table 5. Hispanic or Latino Population Projection in Logan County

	2000	2005	2010
Total Population	11,885	11,119	10,378
Percent Hispanic/Latino	1.68%	2.01%	2.32%
Number Hispanic/Latino	200	223	241

Claritas, Inc. (2005)

Figure 3. Projected Hispanic or Latino Population for Logan County Health Area



Claritas, Inc. (2005)

Table 6. Estimated Population Age 15+ by Marital Status, 2005

	Quad County Area	Percent
Never Married	1,913	21.2
Married, Spouse present	5,362	59.5
Married, Spouse absent	372	4.1
Widowed	718	8.0
Divorced	645	7.2
Males, Never Married	1,025	11.4
Previously Married	488	5.4
Females, Never Married	888	9.9
Previously Married	925	10.3

Claritas, Inc. (2005)

Table 7. Estimated Population Age 25+ by Educational Attainment, 2005

	Quad County Area	Percent
Less than 9th grade	282	4.0
Some High School, no diploma	391	5.5
High School Graduate (or GED)	2,384	33.4
Some College, no degree	1,982	27.8
Associate Degree	557	7.8
Bachelor's Degree	1,066	14.9
Master's Degree	335	4.7
Professional School Degree	81	1.1
Doctorate Degree	62	0.9

Claritas, Inc. (2005)

Table 8. Estimated Households by Household Income, 2005

	Quad County Area	Percent
Income Less than \$15,000	665	14.8
Income \$15,000 - \$24,999	577	12.8
Income \$25,000 - \$34,999	683	15.2
Income \$35,000 - \$49,999	808	18.0
Income \$50,000 - \$74,999	834	18.5
Income \$75,000 - \$99,999	430	9.6
Income \$100,000 - \$149,999	373	8.3
Income \$150,000 - \$249,999	93	2.1
Income \$250,000 - \$499,999	34	0.8
Income \$500,000 and more	4	0.1
Total Estimated Households	4,501	100.0
2005 Estimated Average Household Income		\$52,828
2005 Estimated Median Household Income		\$41,044
2005 Estimated Per Capita Income		\$21,619

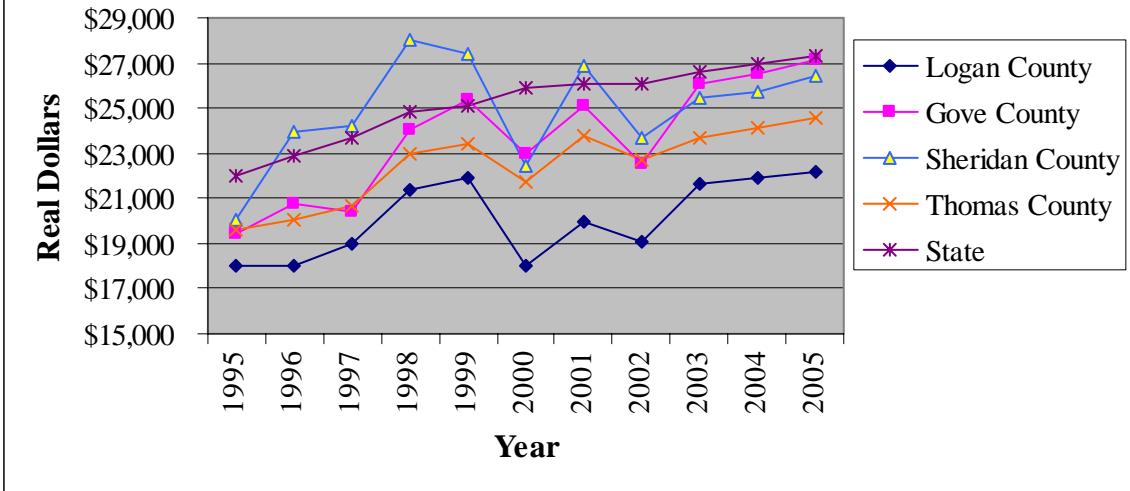
Claritas, Inc. (2005)

Table 9. Estimated All Owner-Occupied Housing Values, 2005

	Quad County Area	Percent
Value Less than \$20,000	264	8.2
Value \$20,000 - \$39,999	305	9.4
Value \$40,000 - \$59,999	444	13.8
Value \$60,000 - \$79,999	478	14.8
Value \$80,000 - \$99,999	553	17.1
Value \$100,000 - \$149,999	710	22.0
Value \$150,000 - \$199,999	249	7.7
Value \$200,000 - \$299,999	165	5.1
Value \$300,000 - \$399,999	41	1.3
Value \$400,000 - \$499,999	7	0.2
Value \$500,000 - \$749,999	10	0.3
Value \$750,000 - \$999,999	4	0.1
Value \$1,000,000 or more	0	0.0

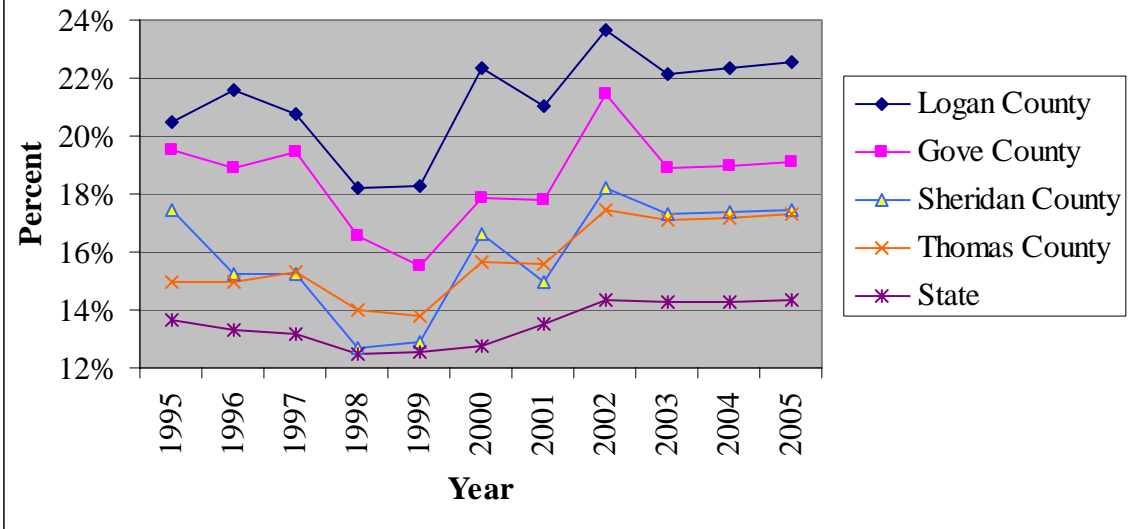
Claritas, Inc. (2005)

Figure 4. Per Capita Income (1996\$), 1995-2005



Woods and Poole, Inc. (2005)

Figure 5. Transfer Payments as a Percent of Total Income



Woods and Poole, Inc. (2005)

Table 10. Quad County Area Personal Income by Major Source

	1995	1996	1997	1998	1999	2000	2001	2002	2003	2004	2005
Total Earnings (Millions 1996\$)	\$227.30	\$240.28	\$240.67	\$284.72	\$291.22	\$234.45	\$263.62	\$228.42	\$251.47	\$256.26	\$260.86
Farm Earnings	\$36.78	\$47.16	\$46.02	\$77.98	\$84.81	\$26.44	\$55.23	\$17.78	\$34.97	\$35.59	\$36.21
Agricultural Services, Other	\$4.67	\$5.12	\$5.23	\$5.87	\$6.47	\$6.58	\$6.52	\$6.66	\$5.88	\$6.07	\$6.26
Mining	\$2.87	\$3.33	\$4.07	\$3.16	\$3.29	\$4.73	\$5.11	\$5.21	\$4.54	\$4.55	\$4.56
Construction	\$10.37	\$10.47	\$10.09	\$9.84	\$10.92	\$11.43	\$11.28	\$12.08	\$13.29	\$13.53	\$13.78
Manufacturing	\$6.33	\$5.88	\$6.12	\$7.07	\$4.95	\$5.74	\$5.43	\$4.87	\$4.95	\$5.00	\$5.05
Transport, Comm. & Public Utility	\$17.00	\$16.97	\$15.80	\$18.24	\$19.21	\$20.51	\$21.41	\$22.33	\$21.49	\$21.72	\$21.95
Wholesale Trade	\$20.13	\$20.59	\$21.44	\$23.06	\$23.11	\$24.50	\$24.92	\$23.97	\$23.87	\$23.97	\$24.08
Retail Trade	\$28.49	\$29.16	\$28.95	\$30.73	\$30.91	\$28.57	\$26.78	\$25.76	\$27.27	\$27.64	\$27.80
Finance, Ins. & Real Estate	\$10.74	\$11.23	\$11.12	\$11.88	\$11.18	\$11.81	\$12.50	\$13.04	\$13.54	\$13.86	\$14.17
Services	\$36.52	\$36.01	\$38.12	\$42.04	\$40.02	\$37.21	\$36.20	\$37.27	\$40.80	\$41.97	\$43.14
Federal Civilian Govt.	\$4.61	\$4.83	\$4.72	\$5.18	\$5.31	\$5.57	\$5.31	\$5.42	\$5.60	\$5.64	\$5.67
Federal Military Govt.	\$1.16	\$1.14	\$1.10	\$1.09	\$1.10	\$1.14	\$1.02	\$0.67	\$0.68	\$0.70	\$0.72
State and Local Govt.	\$47.65	\$48.41	\$47.88	\$48.58	\$49.94	\$50.23	\$51.91	\$53.37	\$54.59	\$56.04	\$57.48
Personal Income (Millions 1996\$)	\$342.72	\$360.42	\$365.11	\$409.68	\$414.75	\$365.65	\$401.80	\$369.08	\$393.07	\$400.07	\$406.92
Wages and Salaries	\$132.41	\$135.66	\$137.91	\$147.62	\$148.50	\$153.19	\$154.71	\$153.34	\$141.75	\$144.62	\$147.37
Other Labor Income	\$28.79	\$28.50	\$28.12	\$29.76	\$30.14	\$31.25	\$32.02	\$33.29	\$29.88	\$30.40	\$30.89
Proprietors Income	\$66.10	\$76.12	\$74.64	\$107.34	\$112.59	\$50.01	\$76.89	\$41.80	\$79.84	\$81.25	\$82.60
Dividends, Interest & Rent	\$80.78	\$83.70	\$86.57	\$89.35	\$87.47	\$92.95	\$94.31	\$92.86	\$93.55	\$94.83	\$96.12
Transfer Pmts. To Persons	\$58.73	\$60.42	\$61.79	\$60.96	\$60.89	\$63.05	\$67.00	\$71.00	\$71.90	\$73.51	\$75.18
Less Social Ins. Contributions	\$22.93	\$22.85	\$22.96	\$24.29	\$24.03	\$23.90	\$24.07	\$24.45	\$24.89	\$25.57	\$26.27
Residence Adjustment	(\$1.15)	(\$1.14)	(\$0.97)	(\$1.05)	(\$0.80)	(\$0.90)	\$0.93	\$1.25	\$1.04	\$1.04	\$1.04

Woods and Poole, Inc. (2005)

Historical Employment, earnings, and income data 1969-2002, and total population data 1969-2003, are from the U.S. Dept. of Commerce (USDoC); employment and earnings data by private non-farm SIC industry for 2001 and 2002 are estimated from private non-farm NAICS industry data.

Table 11. Transfer Payments for Quad County Area

	2001	2002	2003
Personal current transfer receipts (\$000)	73,336	77,912	78,024
Current transfer receipts of individuals from governments	68,524	73,880	74,214
Retirement and disability insurance benefits	35,267	36,630	37,182
Old-age, survivors, and disability insurance (OASDI) benefits	34,206	35,498	36,067
Railroad retirement and disability benefits	951	983	961
Workers' compensation	(L)	(L)	(L)
Other government retirement and disability insurance benefits 1/	(L)	(L)	(L)
Medical benefits	27,269	29,957	29,462
Medicare benefits	18,441	19,743	20,151
Public assistance medical care benefits 2/	8,714	10,072	9,208
Military medical insurance benefits 3/	(L)	(L)	(L)
Income maintenance benefits	2,590	2,902	3,386
Supplemental security income (SSI) benefits	579	582	527
Family assistance 4/	(L)	(L)	(L)
Food stamps	(L)	(L)	(L)
Other income maintenance benefits 5/	1,364	1,580	1,993
Unemployment insurance compensation	1,000	1,716	1,639
State unemployment insurance compensation	981	1,684	1,604
Unemployment compensation for Fed. civilian employees (UCFE)	(L)	(L)	(L)
Unemployment compensation for railroad employees	(L)	(L)	(L)
Unemployment compensation for veterans (UCX)	(L)	(L)	(L)
Other unemployment compensation 6/	0	0	0
Veterans benefits	939	1,152	1,132
Veterans pension and disability benefits	916	1,113	1,101
Veterans readjustment benefits 7/	(L)	(L)	(L)
Veterans life insurance benefits	0	0	0
Other assistance to veterans 8/	0	0	0
Federal education and training assistance	(L)	(L)	(L)
Other transfer receipts of individuals from governments 10/	(L)	(L)	(L)
Current transfer receipts of nonprofit institutions	2,699	2,679	2,773
Receipts from the Federal government	493	533	587
Receipts from state and local governments 11/	1,529	1,543	1,585
Receipts from businesses	677	603	601
Current transfer receipts of individuals from businesses 12/	2,113	1,353	1,037

Bureau of Economic Analysis (2005)

Notes for Table 11:

1. Consists largely of temporary disability payments and black lung payments.
2. Consists of medicaid and other medical vendor payments.
3. Consists of payments made under the TriCare Management Program (formerly called CHAMPUS) for the medical care of dependents of active duty military personnel and of retired military personnel and their dependents at nonmilitary medical facilities.
4. Through 1995, consists of emergency assistance and aid to families with dependent children. For 1998 forward, consists of benefits— generally known as temporary assistance for needy families— provided under the Personal Responsibility and Work Opportunity Reconciliation Act of 1996. For 1996–97, consists of payments under all three of these programs.
5. Consists largely of general assistance, refugee assistance, foster home care and adoption assistance, earned income tax credits, and energy assistance.
6. Consists of trade readjustment allowance payments, Redwood Park benefit payments, public service employment benefit payments, and transitional benefit payments.
7. Consists largely of veterans' readjustment benefit payments, educational assistance to spouses and children of disabled or deceased veterans, payments to paraplegics, and payments for autos and conveyances for disabled veterans.
8. Consists of State and local government payments to veterans.
9. Consists largely of federal fellowship payments (National Science Foundation fellowships and traineeships, subsistence payments to State maritime academy cadets, and other federal fellowships), interest subsidy on higher education loans, basic educational opportunity grants, and Job Corps payments.
10. Consists largely of Bureau of Indian Affairs payments, education exchange payments, Alaska Permanent Fund dividend payments, compensation of survivors of public safety officers, compensation of victims of crime, disaster relief payments, compensation for Japanese internment, and other special payments to individuals.
11. Consists of State and local government educational assistance payments to nonprofit institutions, and other State and local government payments to nonprofit institutions.
12. Consists largely of personal injury payments to individuals other than employees and other business transfer payments.

All state and local area dollar estimates are in current dollars (not adjusted for inflation).

(L) Less than \$50,000, but the estimates for this item are included in the totals.

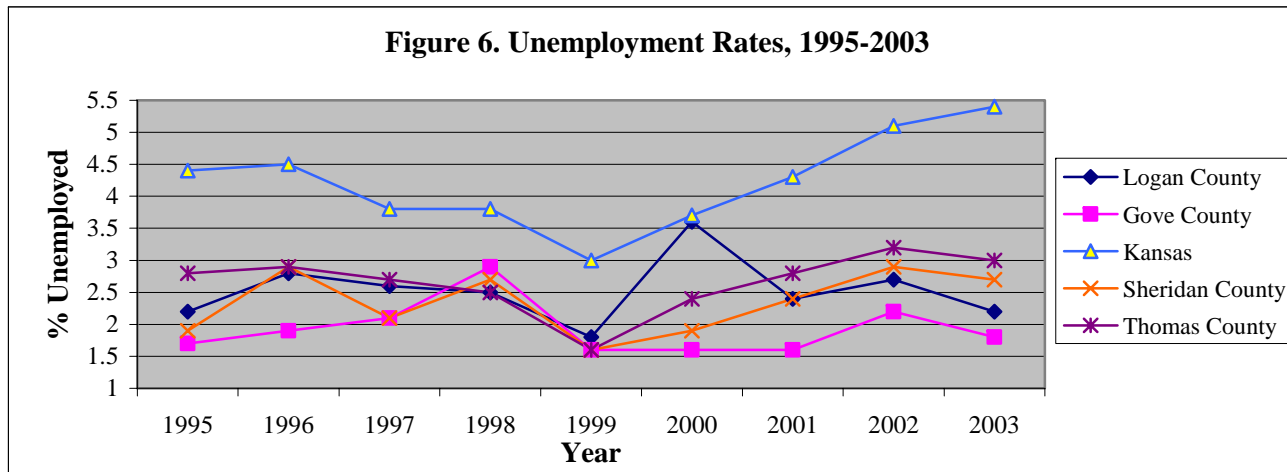
(N) Data not available for this year.

Table 12. Employment by Major industry for the Quad County Area

	1996	1997	1998	1999	2000	2001	2002	2003	2004	2005
Total Employment (Thousands)	12.46	12.74	12.75	12.70	12.82	12.86	12.76	12.70	12.83	12.95
Farm Employment	2.30	2.35	2.34	2.36	2.37	2.28	2.26	2.23	2.22	2.22
Agriculture Services	0.41	0.46	0.47	0.47	0.50	0.47	0.45	0.46	0.47	0.48
Mining	0.28	0.25	0.26	0.22	0.18	0.19	0.18	0.19	0.19	0.19
Construction	0.49	0.49	0.44	0.45	0.49	0.53	0.55	0.61	0.62	0.63
Manufacturing	0.29	0.26	0.27	0.30	0.25	0.27	0.25	0.24	0.24	0.24
Transport, Comm. & Public Utility	0.48	0.47	0.47	0.52	0.53	0.53	0.53	0.54	0.54	0.55
Wholesale Trade	0.71	0.72	0.75	0.80	0.81	0.83	0.82	0.80	0.80	0.80
Retail Trade	2.13	2.28	2.28	2.20	2.19	2.23	2.18	2.10	2.12	2.14
Finance, Ins. & Real Estate	0.57	0.58	0.60	0.57	0.57	0.58	0.60	0.65	0.66	0.66
Services	2.36	2.41	2.40	2.35	2.41	2.44	2.38	2.35	2.39	2.44
Federal Civilian Govt	0.10	0.11	0.11	0.11	0.12	0.13	0.12	0.12	0.12	0.12
Federal Military Govt	0.10	0.09	0.09	0.08	0.08	0.08	0.07	0.05	0.05	0.05
State and Local Govt	2.25	2.28	2.28	2.26	2.32	2.31	2.36	2.37	2.41	2.45

Woods and Poole, Inc (2005)

Employment in number of jobs includes proprietors and part-time jobs.



Kansas Statistical Abstract (2005)

Health and Behavioral Data

Table 13. Persons Served by State/Medicaid Funded Services in the Quad County Area

Major Services [2]	Persons Served [1]		
	FY 2002	FY 2003	FY 2004
Temporary Assistance for Families	93	96	83
% Total Population	0.56%	0.59%	0.51%
Employment Preparation Services	47	58	55
% Total Population	0.28%	0.35%	0.34%
Child Care Assistance	29	69	94
% Total Population	0.17%	0.42%	0.57%
Food Assistance	511	592	626
% Total Population	3.07%	3.62%	3.82%
Energy Assistance *	344	401	362
% Total Population	2.07%	2.45%	2.21%
General Assistance	8	9	11
% Total Population	0.05%	0.05%	0.07%
Vocational Rehabilitation Services	83	68	76
% Total Population	0.50%	0.42%	0.46%
Family Preservation *	6	10	11
% Total Population	0.04%	0.06%	0.07%
Reintegration/Foster Care	9	33	13
% Total Population	0.05%	0.20%	0.08%
Adoption Support	16	15	17
% Total Population	0.10%	0.09%	0.10%
Health Care Total	1,575	1,786	1,966
% Total Population	9.47%	10.91%	12.01%
Health Care Populations:			
Families	1,129	1,258	1,405
Elderly and Disabled	413	444	481
Child Welfare	59	79	73
Other	4	5	7
Health Care by Major Services			
Pharmacy	754	350	355
Inpatient	156	504	576
Managed Care	1,347	728	797
Rehabilitation Services	62	923	856
Community Mental Health Center	134	98	93
Physician	659	437	415
Other	0	390	391
Medicaid Funded Community Based Services	49	45	44
% Total Population	0.29%	0.27%	0.27%
Institutional Services	144	137	150
% Total Population	0.87%	0.84%	0.92%

Kansas Department of Social Rehabilitative Services (2004)

1. All persons served represent the average monthly persons served per year. The exceptions are asterisked. The unit of service for energy assistance is the annual households served and the unit of service for family preservation is the number of families referred. 2. This is not an exhaustive listing of all programs within SRS. This listing does not include Grants. 3. This total excludes expenditures from programs not listed.

Table 14. Logan County Nursing Home/Assisted Living Beds, Occupancy

	2001	2002	2003	2004
Nursing Home				
Beds	36	33	34	35
Occupancy	19	28	32	33
Occupancy Rate	53.9%	86.2%	94.9%	94.7%

Kansas Department on Aging

Occupancy Data for July-December of each year

Table 15. Child Abuse and Juvenile Crime

	Logan	Gove	Sheridan	Thomas	State
Substantiated Child Abuse and Neglect	6	7	2	21	7,024
Cases per 1,000 children 17 and under (2003)	9	10	3.1	10.9	10.1
Annual Average Rate 1998-2002	13	7.6	7.1	12.4	11.3
Percent Change	-31	32.1	-56.1	-11.7	-10.6
Juvenile Court Filings (through June 2004)	5	5	2	13	14,719
Rate per 1,000 children under 17	7.5	7.1	3.1	6.8	21.2
Annual Average Rate 1998-2002	13.5	19.8	1.1	15.6	23.3
Percent Change	-44.8	-64	174.5	-56.6	-9

Kansas KIDSCount (2005)

Table 16. Birth Weight, Infant Mortality, Births to Underage Mothers, Childhood Deaths etc.

Births to School-Aged Mothers (2003)					
	Logan	Gove	Sheridan	Thomas	State
Number	0	0	0	2	1,214
Rate per 1,000 school-aged females	0	0	0	4.6	7.8
Annual Average Rate 1998-2002	2.1	2.1	2.2	2.4	9.2
Percent Change	-100	-100	-100	88.5	-15.2
Infant Mortalities					
Number	0	1	0	0	262
Rate per 1,000	0	30.3	0	0	6.7
Annual Average Rate 1998-2002	5.7	0	0	7.9	7.1
Percent Change	-100	0	0	-100	-15.2
Childhood Deaths					
Number	0	0	0	2	126
Rate per 100,000 children 14 and younger	0	0	0	135.1	23.5
Annual Average Rate 1998-2002	35.5	0	38.4	12.3	25.6
Percent Change	-100	0	-100	996.8	-82
Low Birth Weight Babies					
Number	0	3	1	4	2,902
Rate (percent of live births)	0	9.1	3.8	4.4	7.4
Annual Average Rate 1998-2002	5.1	4.9	9.3	6.5	7
Percent Change	-100	85.2	-58.7	-32.3	5.7

Kansas KIDSCount (2005)

Table 17. Maternity Statistics

	Logan	Gove	Sheridan	Thomas	State
Births by Age of Mother (2003)					
Less than 20 years	13	1	0	9	4,097
20-24 years	22	11	6	30	11,066
25-29	16	8	9	28	11,102
30-34	14	11	7	14	8,641
35 and older	7	2	4	10	4,440
Births by Mother's Race (2003)					
White	30	33	26	88	34,801
Black	0	0	0	0	2,753
Other Non-White	1	0	0	3	1,716
Not Specified	0	0	0	0	83
KDHE Annual Summary of Vital Statistics (2003)					
Births to Mothers with Less than High School Degree					
Number	2	2	0	7	7,185
Rate (percent of live births)	6.5	6.1	0	7.7	18.5
Annual Average Rate 1998-2002	6.9	11.7	3.9	9.1	18.6
Percent change	-5.9	-48	-100	-15.2	-0.5
Births with Adequate or Better Prenatal Care					
Number	23	25	23	73	31,539
Rate (percent)	74.2	75.8	88.5	80.2	81.2
Annual Average Rate 1998-2002	80.6	75.2	82.7	82.1	80.8
Percent change	-7.9	0.8	7	-2.3	0.5

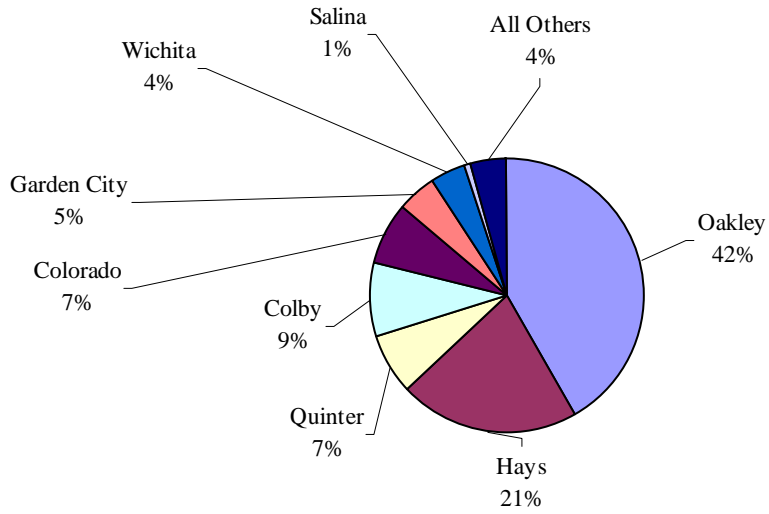
Kansas KIDSCount (2005)

Table 18. Logan County Hospital Data

	L.C.H.	State
Licensed Acute Beds	25	13,739
Staffed Beds	25	10,008
Staffed Beds Nursing Home Unit	35	1,845
Admissions		
Hospital	330	347,027
Nursing Home Unit	18	4,749
Swing Beds	69	10,719
Emergency Room Visits	2,257	958,033
Outpatient Visits	13,639	6,286,216
Inpatient Surgical Operations	7	97,709
Outpatient Surgical Operations	237	179,985
Medicare Discharges		
Hospital	143	150,521
Nursing Home Unit	0	3,035
Medicare Inpatient Days		
Hospital	452	858,611
Nursing Home Unit	0	34,319
Medicaid Discharges		
Hospital	24	41,905
Nursing Home Unit	6	367
Medicaid Inpatient Days		
Hospital	5,695	460,090
Nursing Home Unit	5,646	203,233

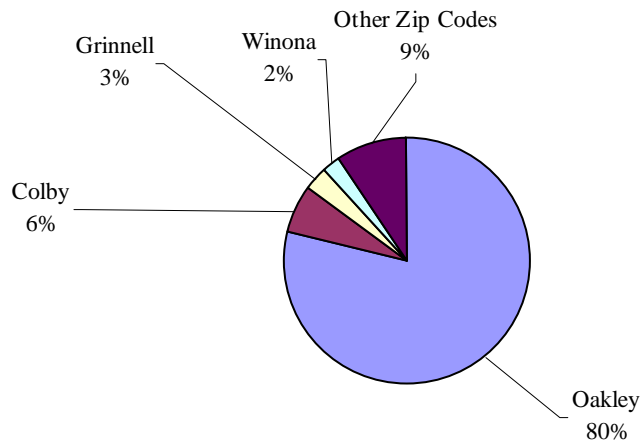
Kansas Hospital Association STAT Book (2004)

Figure 7. Hospital Visits by Patient Destination for Logan County, October 2003-March 2005



Kansas Hospital Association Discharges by Major Service (2005)

Figure 8. Logan County Hospital Visits by Patient Origin, October 2003-March 2005



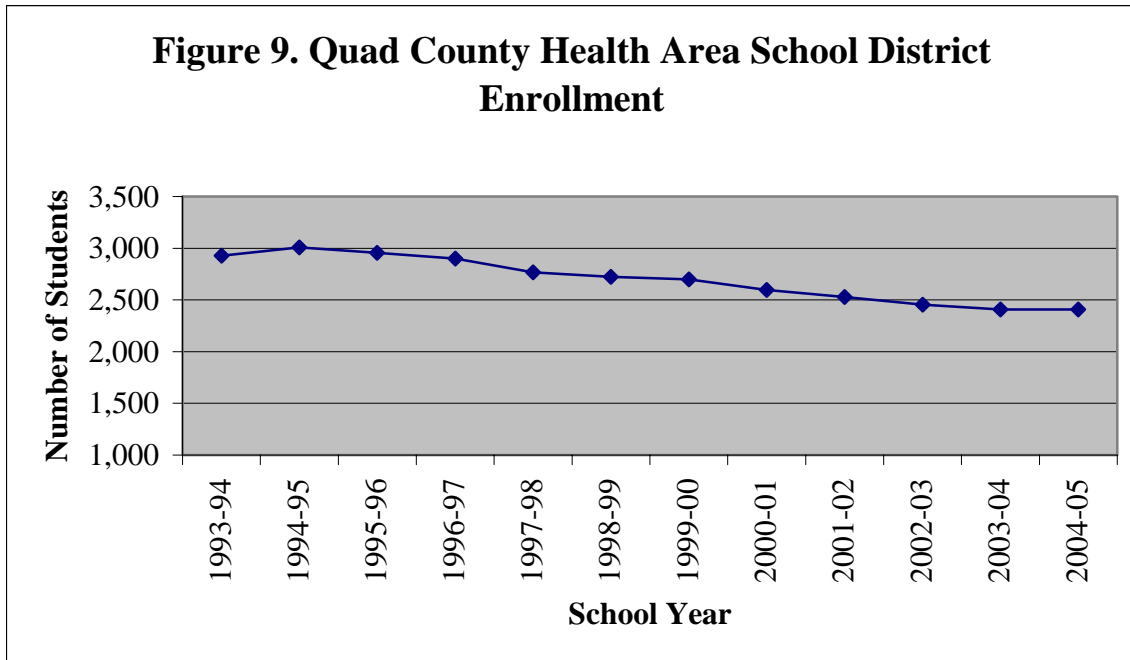
Kansas Hospital Association Discharges by Major Service (2005)

Education

Table 19. Quad County Health Area School Districts

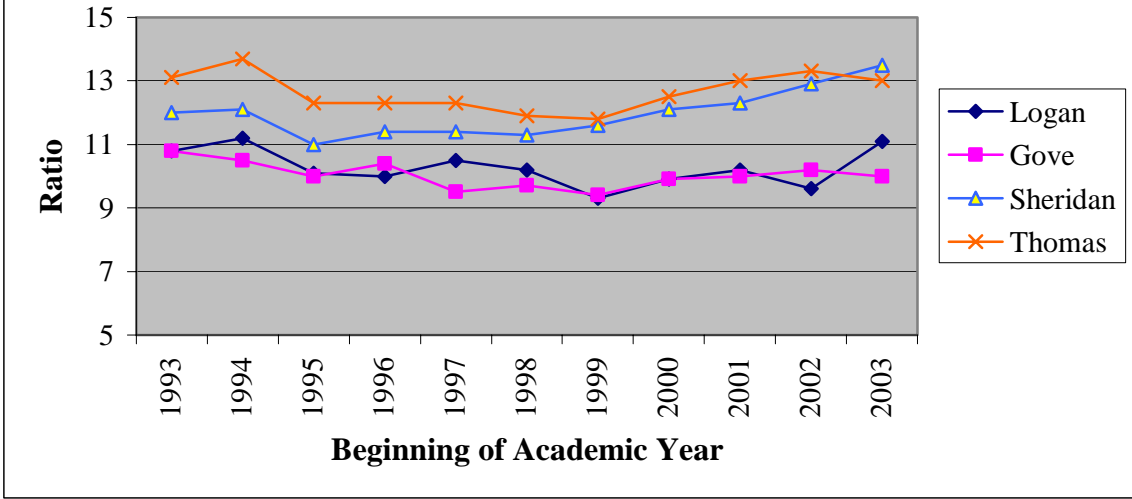
School Districts	County
USD 274 Oakley	Logan
USD 275 Triplains	Logan
USD 291 Grinnell Public Schools	Gove
USD 292 Wheatland	Gove
USD 315 Colby	Thomas

Kansas Department of Education (2005)



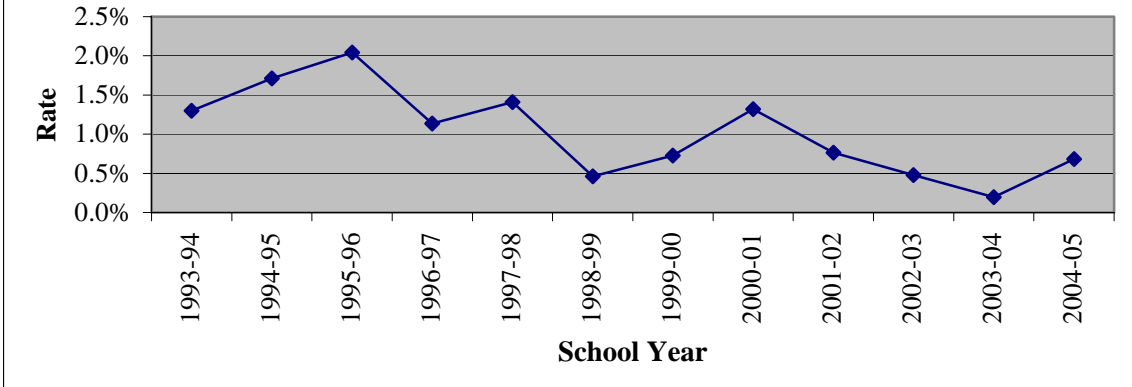
Kansas Department of Education (2005)

Figure 10. Student-Teacher Ratio, 1993-2003



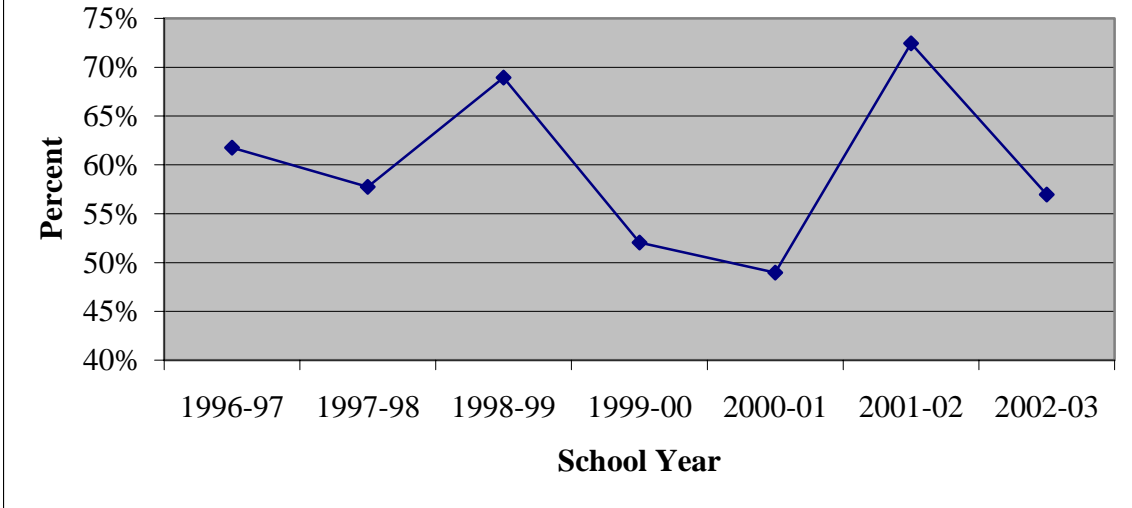
Kansas Statistical Abstract (2005)

Figure 11. Dropout Rates for Quad County Health Area School Districts



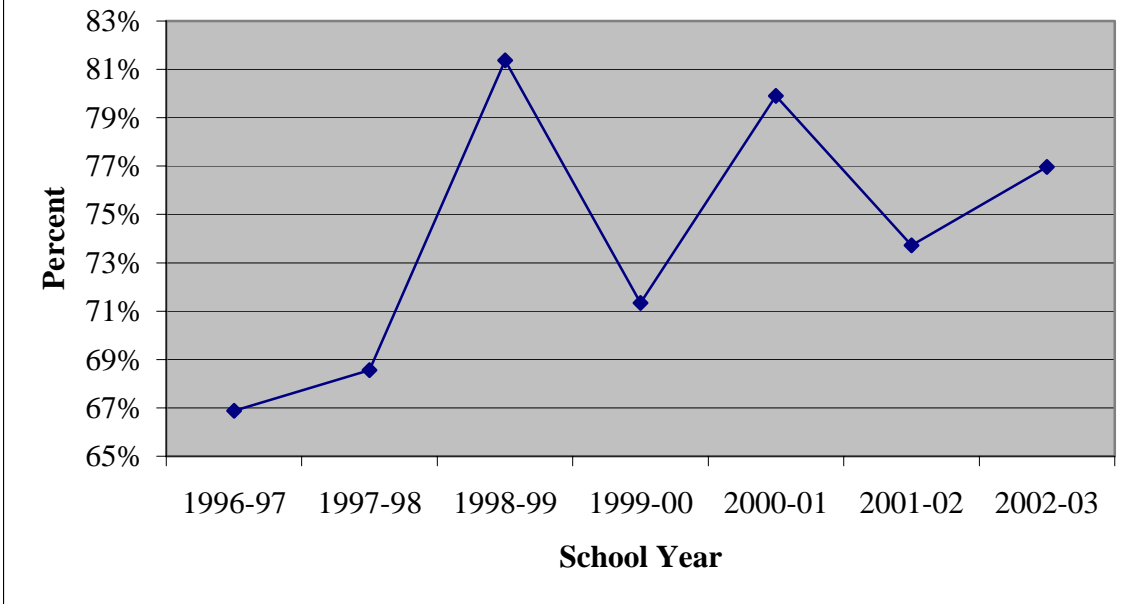
Kansas Statistical Abstract (2005)

Figure 12. Percent of Total Graduates Passing At Least One Advanced Math Course



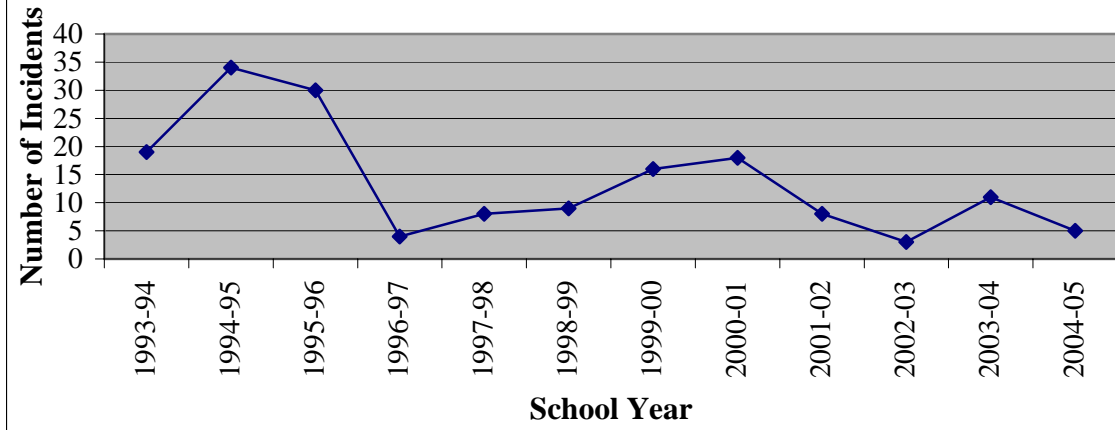
Kansas Department of Education (2005)

Figure 13. Percent of Total Graduates Passing At Least One Advanced Science Course



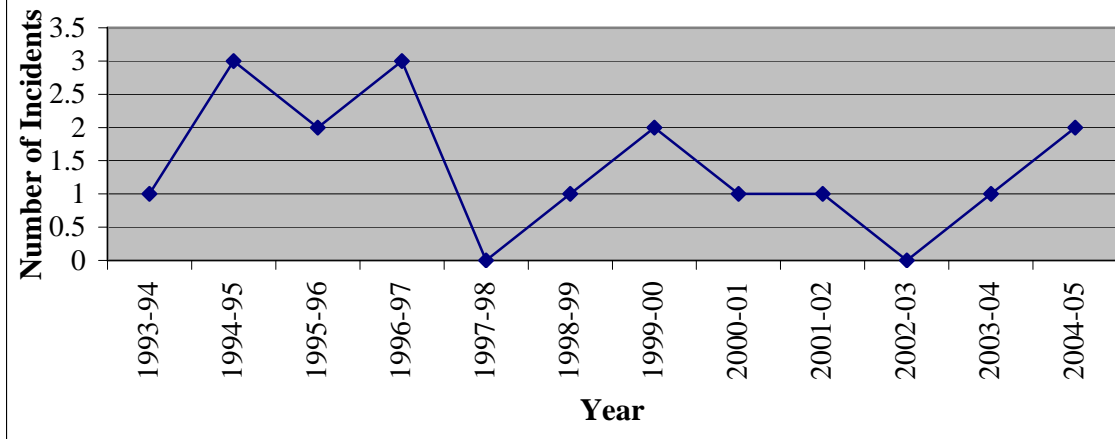
Kansas Department of Education (2005)

Figure 14. Incidents of Student-on-Student Violence by School Year, 1993-2004



Kansas Department of Education (2005)

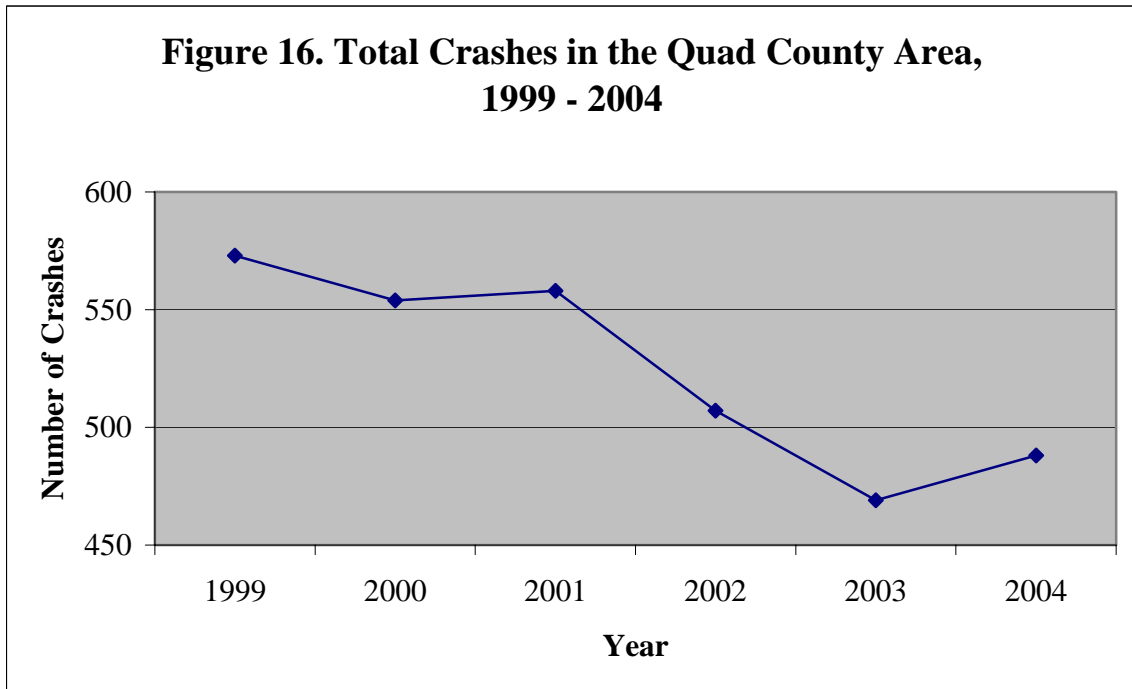
Figure 15. Incidents of Student-on-Faculty Violence by School Year, 1993-2004



Kansas Department of Education (2005)

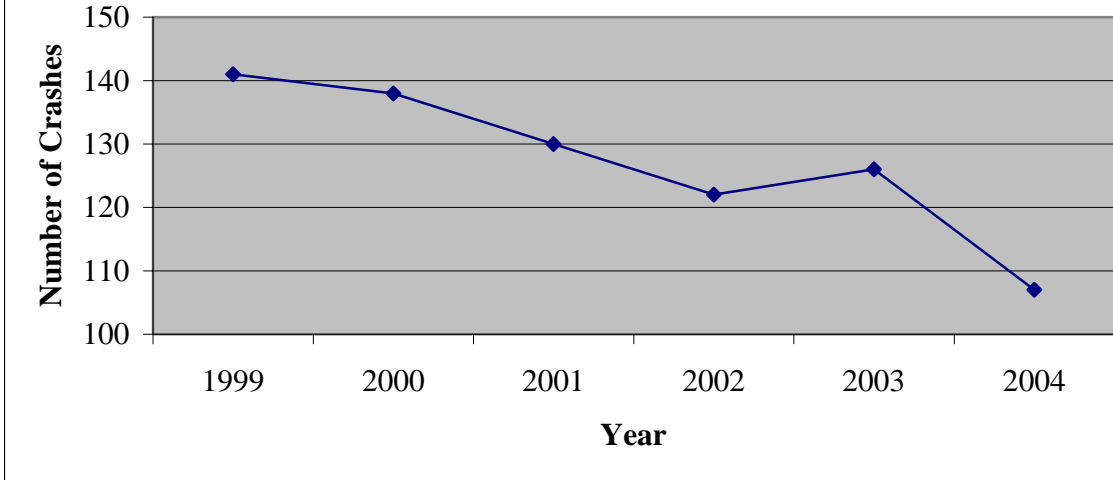
Traffic

Table 20. Traffic Accident Facts									
	Total Accidents				Rate per 1,000 population				
	Logan	Gove	Sheridan	Thomas	Logan	Gove	Sheridan	Thomas	State
Accidents									
Total	75	100	66	239	26.5	34.4	24.8	30.1	27.5
Fatal Accidents	2	5	2	5	0.7	1.7	0.8	0.6	0.2
Injury Accidents	17	30	13	65	6.0	10.3	4.9	8.2	6.3
Property Damage Only	56	65	51	169	19.8	22.3	19.2	21.3	21.1
Deer Involved	10	19	18	20	3.5	6.5	6.8	2.5	3.3
Speed Related	6	9	5	32	2.1	3.1	1.9	4.0	3.1
Alcohol Related	2	4	2	13	0.7	1.4	0.8	1.6	1.3
People									
Deaths	2	7	2	5	0.7	2.4	0.8	0.6	0.2
Injuries	25	64	18	115	8.8	22.0	6.8	14.5	9.1
Pedestrians	2	0	0	2	0.7	0.0	0.0	0.3	0.3
% Restraint Use					69.1%	69.2%	77.4%	80.6%	83.7%
2003 Kansas Traffic Accident Facts County Summaries									



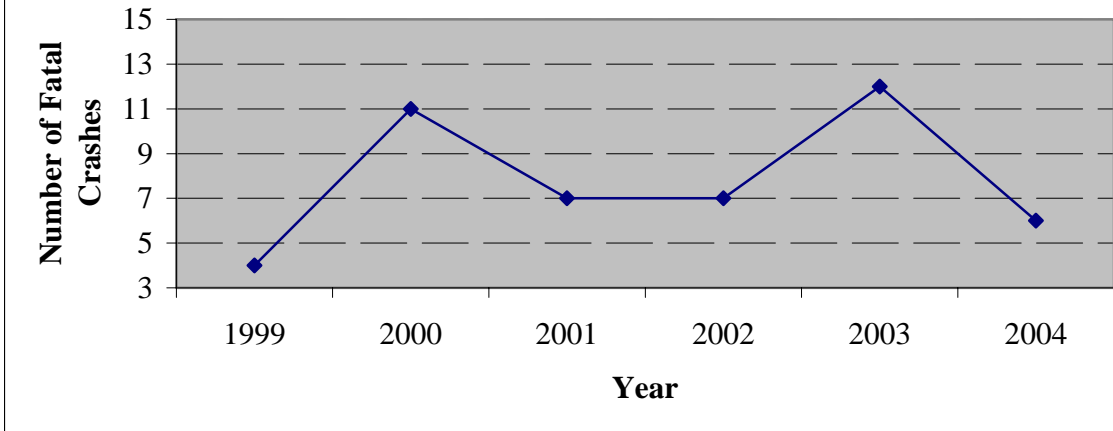
Kansas Traffic Facts (2004)

Figure 17. Injury Only Crashes in the Quad County Area, 1999 - 2004



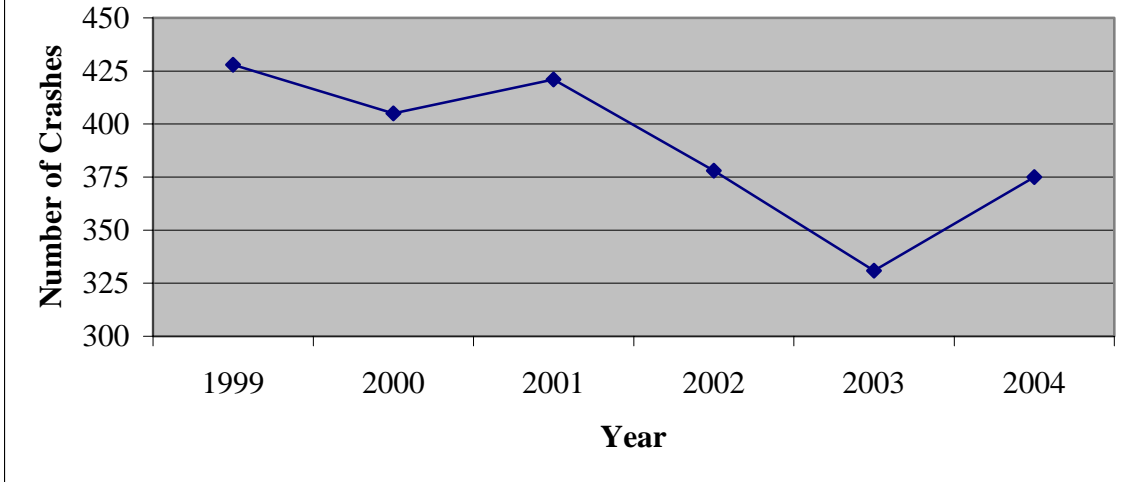
Kansas Traffic Facts (2004)

Figure 18. Total Crash Fatalities in the Quad County Area, 1999-2004



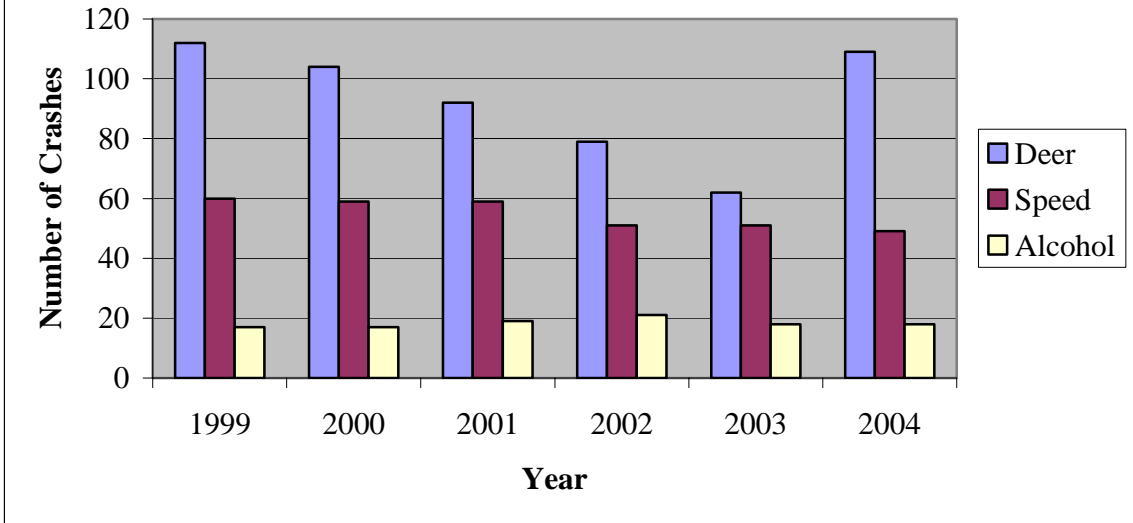
Kansas Traffic Facts (2004)

Figure 19. Property Damage Only Crashes in the Quad County Area, 1999 - 2004



Kansas Traffic Facts (2004)

Figure 20. Other Types of Crashes, 1999 - 2004



Kansas Traffic Facts (2004)

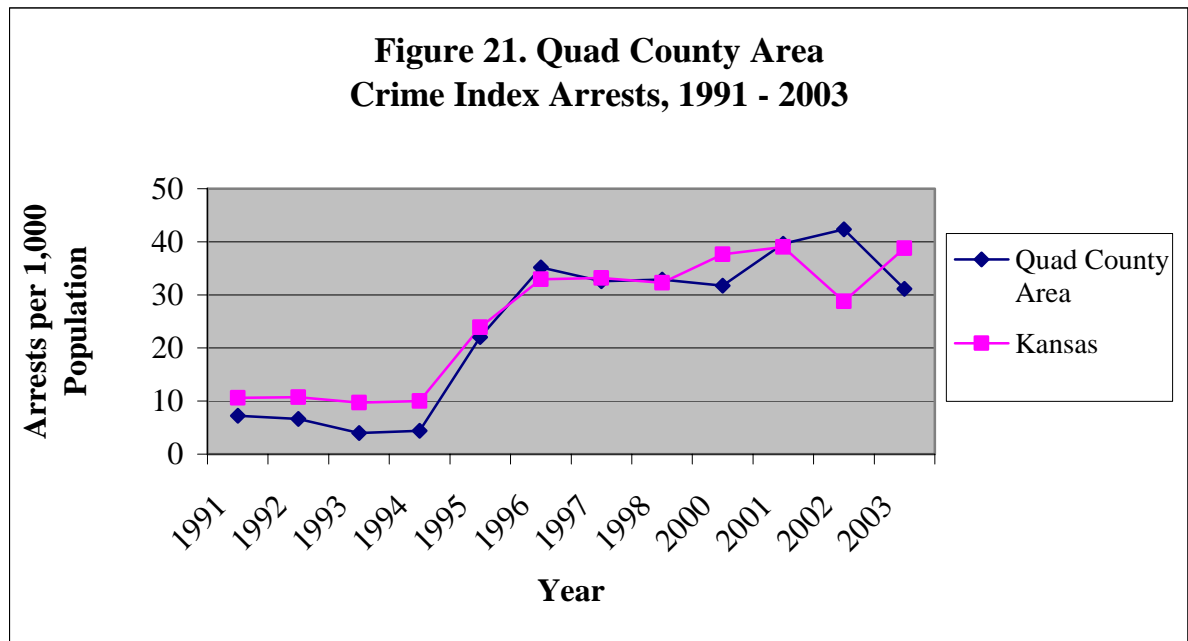
Crime

Table 21. Crime Statistics

2003						
	Crime Index Offenses		Violent Crime		Property Crime	
	Number	Rate Per 1,000	Number	Rate Per 1,000	Number	Rate Per 1,000
Quad County Area	371	23	23	1	348	21
State	117,295	43	10,099	4	107,196	39
2004						
	Crime Index Offenses		Violent Crime		Property Crime	
	Number	Rate Per 1,000	Number	Rate Per 1,000	Number	Rate Per 1,000
Quad County Area	371	23	38	2	333	20
State	117,246	45	10,493	4	106,753	41

Kansas Statistical Abstract (2003)

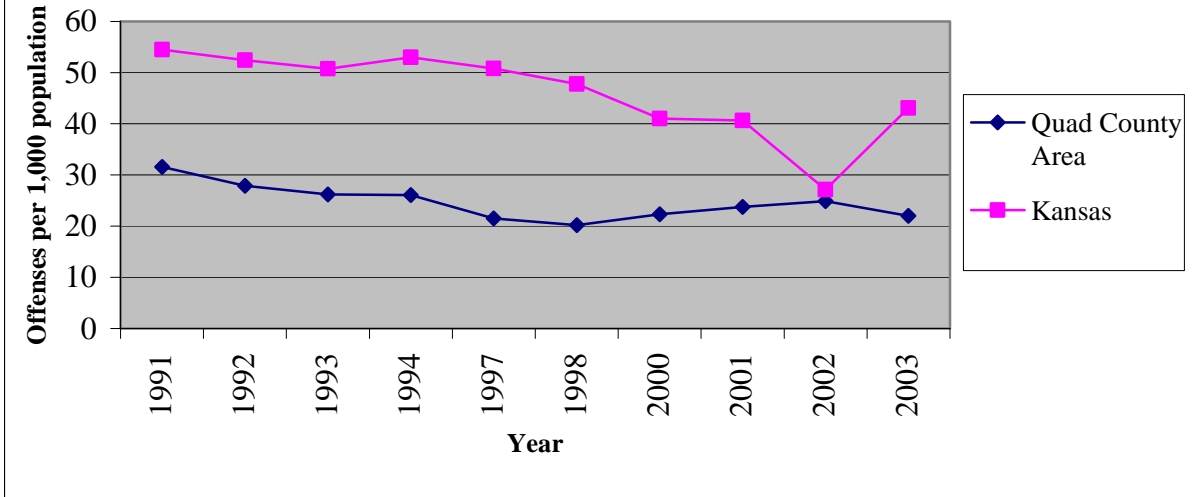
Index crimes include murder, rape, robbery, aggravated assault, burglary, larceny, and motor vehicle theft.



Kansas Statistical Abstract (2005)

Index crimes include murder, rape, robbery, aggravated assault, burglary, larceny, and motor vehicle theft.

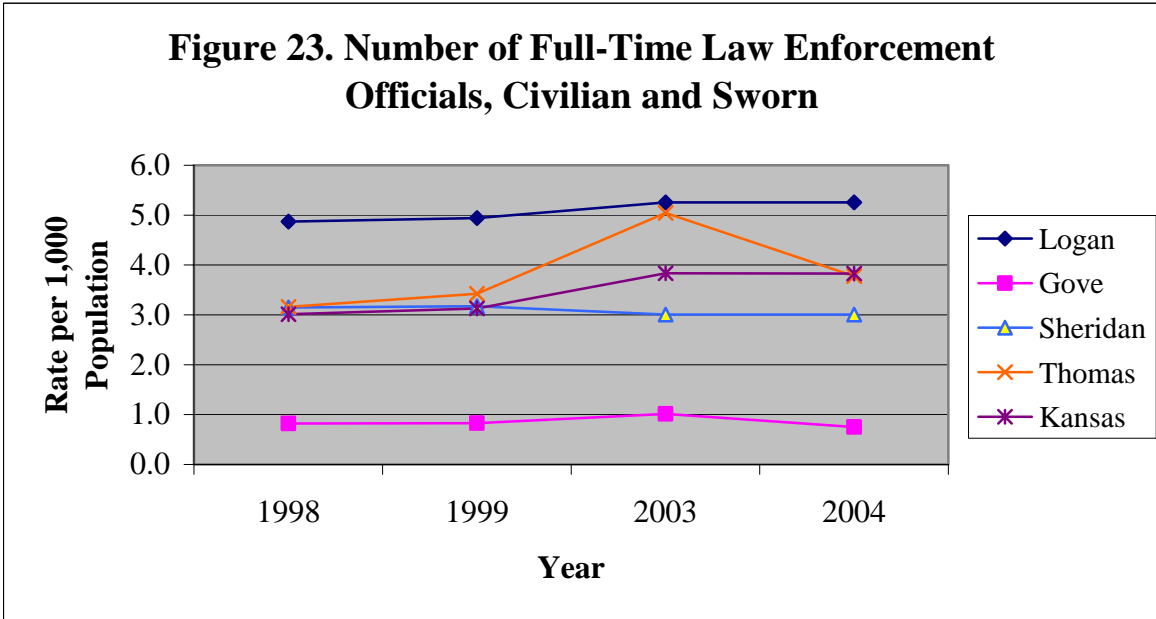
**Figure 22. Quad County Area
Crime Index Offenses, 1991-2003**



Kansas Statistical Abstract (2005)

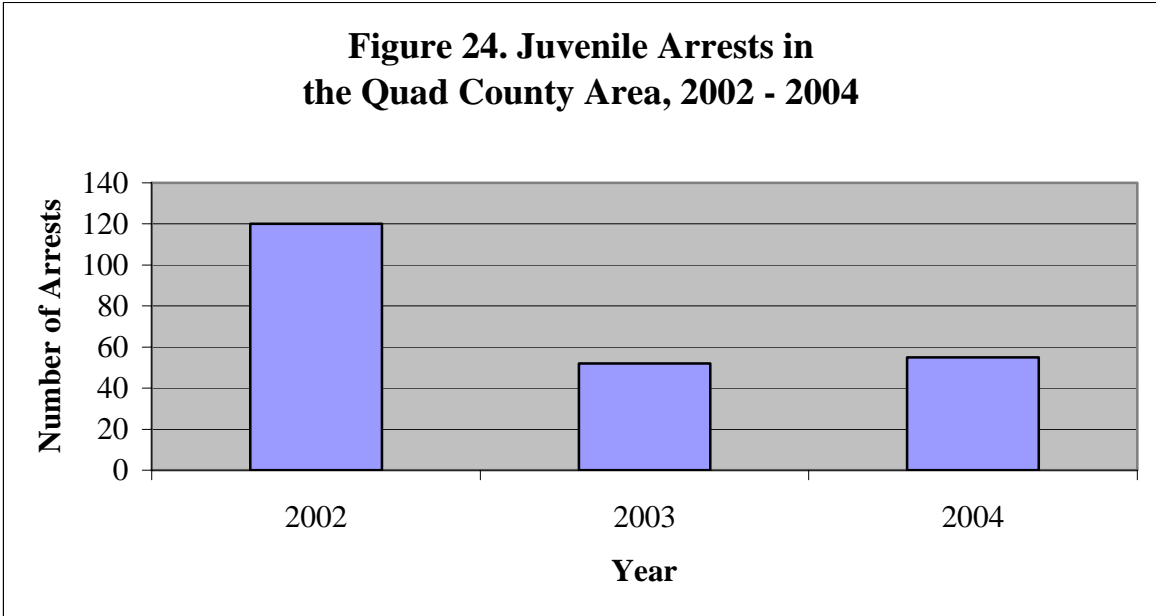
Index crimes include murder, rape, robbery, aggravated assault, burglary, larceny, and motor vehicle theft.

Figure 23. Number of Full-Time Law Enforcement Officials, Civilian and Sworn



Kansas Statistical Abstract (2003)

Figure 24. Juvenile Arrests in the Quad County Area, 2002 - 2004



Kansas Statistical Abstract (2005)

Index

Accidents, 28
Arrests, 34
Child Abuse, 17
Crashes, 28, 29, 30
Income, 9, 11
Infant Mortality, 18
Population, 5, 6, 8
Property Crime, 32
Unemployment, 14
Violence, 26
Violent Crime, 32



**Kansas State University Agricultural Experiment Station and Cooperative Extension Service,
Manhattan, Kansas.**

It is the policy of Kansas State University Agricultural Experiment Station and Cooperative Extension Service that all persons shall have equal opportunity and access to its educational programs, services, activities, and materials without regard to race, color, religion, national origin, sex, age or disability. Kansas State University is an equal opportunity organization.

Issued in furtherance of Cooperative Extension Work, Acts of May 8 and June 30, 1914, as amended. Kansas State University, County Extension Councils, Extension Districts, and United States Department of Agriculture Cooperating, Fred A. Cholick, Dean, College of Agriculture.